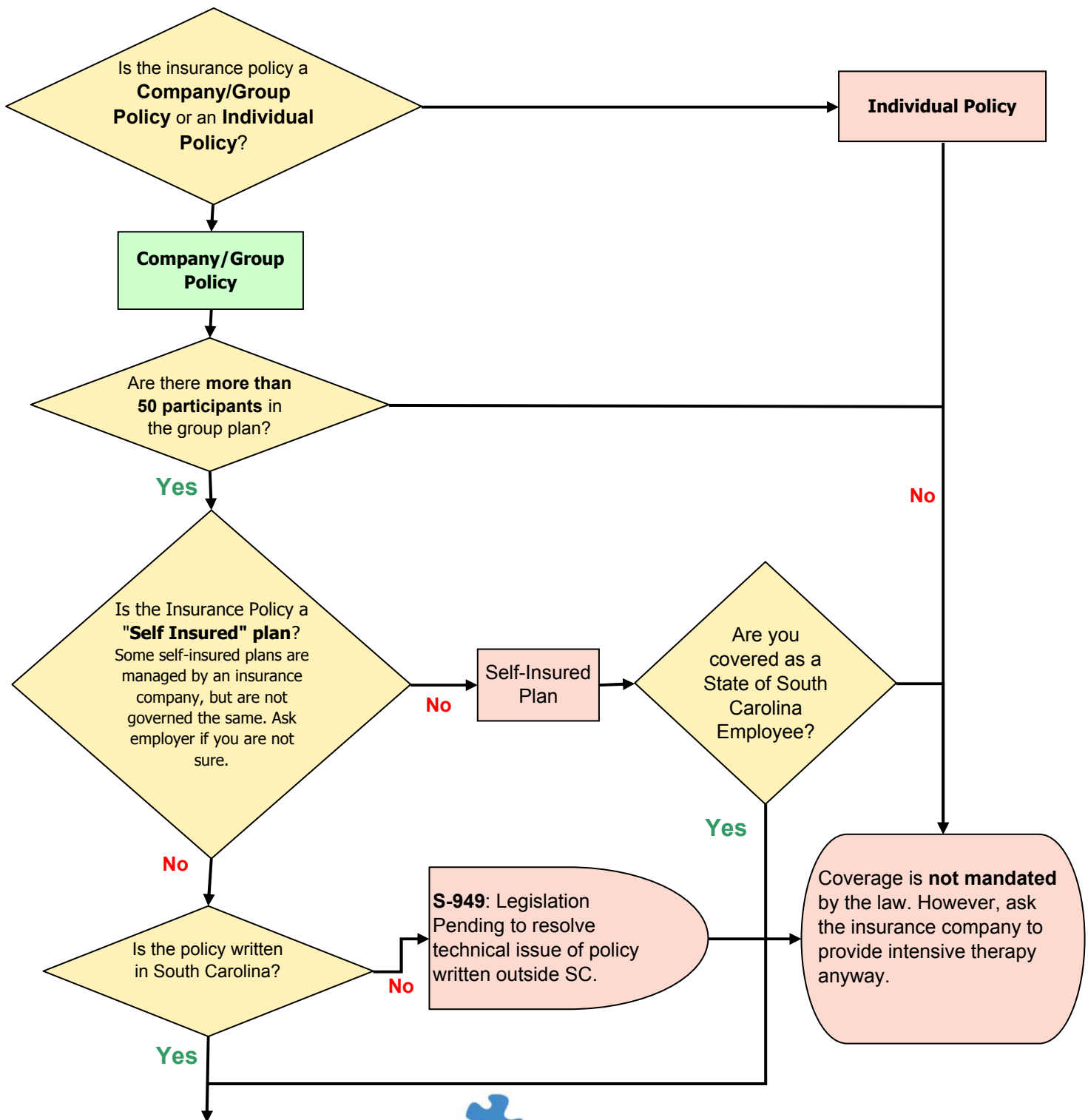


Questions to Ask about your Insurance



Your plan should be mandated to cover autism treatment. Please talk to your employer.

Also note that the policy is not mandated to provide coverage until the policy's renewal date **AFTER** July 1, 2008.



South Carolina Autism Society

Together We Can Solve The Puzzle

806 12th Street, West Columbia, SC 29169

800-438-4790 • www.scautism.org

This flowchart is designed to help families determine if their insurance will be mandated under Ryan's Law to provide intensive therapy. Please be sure to talk to your insurance company or your employer benefit specialist for more details.

TEFRA and Medicaid do not currently cover these services.